

Enrollment Projections and Boundaries

Enrollment Committee – Meeting 2
November 17, 2016

Student Achievement Goal

Ensure growth and proficiency toward college and career readiness

Family & Community Goal

Engage families & community in partnerships to advance the mission/vision of the district

Learning Conditions Goal

Provide a safe, nurturing, and academically engaging learning environment

Staff

Recruit, recognize, retain, inspire and reward an exceptional workforce

Resources

Make optimal use of our resources in achieving our mission, vision, values and goals



Agenda

6:00- Review enrollment projection data

6:20- Group discussion about enrollment projections

6:40- Review current boundary areas and impact of projected enrollment on building capacities

7:00- Group discussion on possible solutions

7:20- Review discussions and agenda for December 14 meeting

Where We Left Off

- Discussed historical and current enrollment data
- Discussed District policies related to enrollment and boundaries
- Set agenda items and goals for next meeting

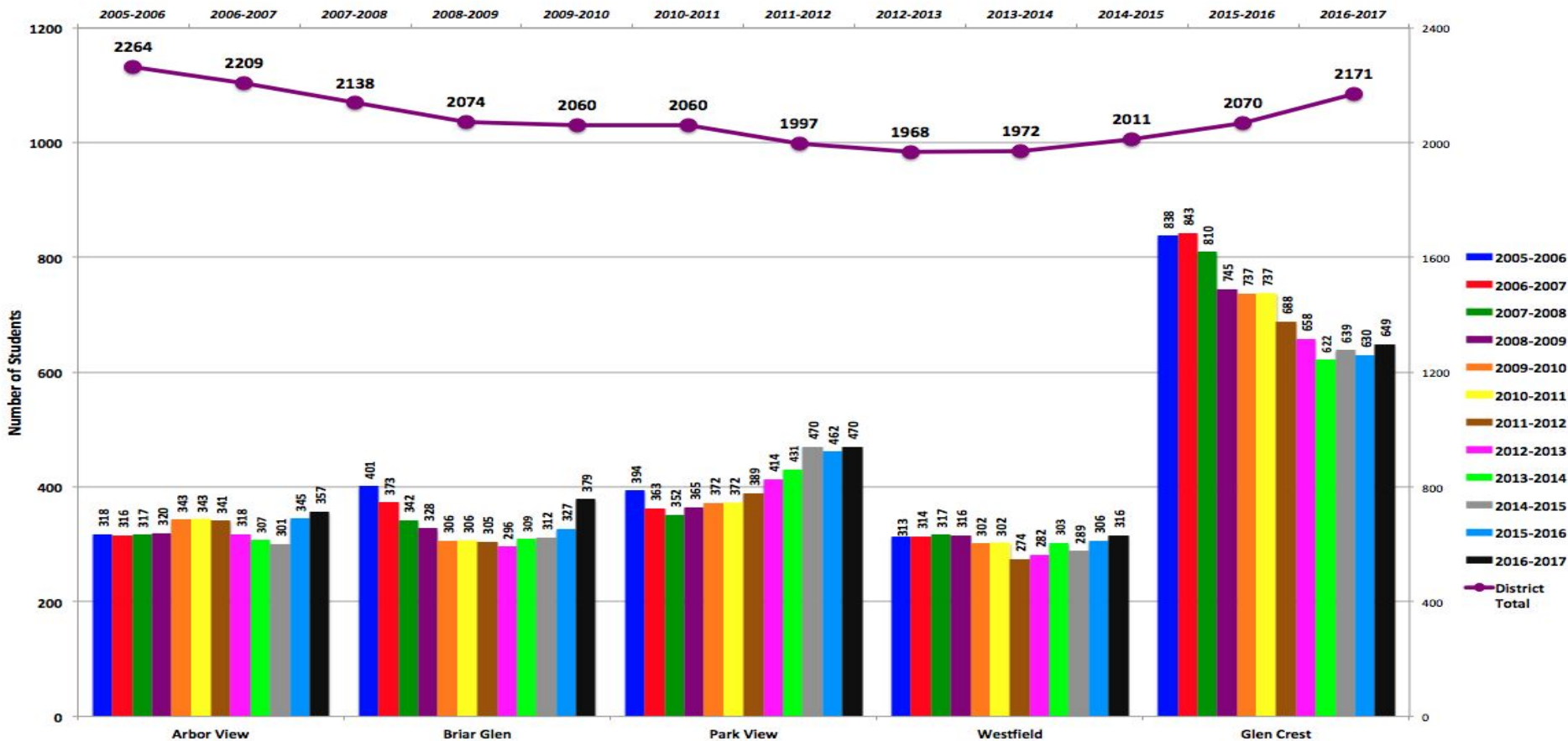
Intended Outcomes

- Understand future enrollment projections based on Dr. John Kasarda's report
- Discuss recommendations to maximize building occupancy and limit administrative transfers

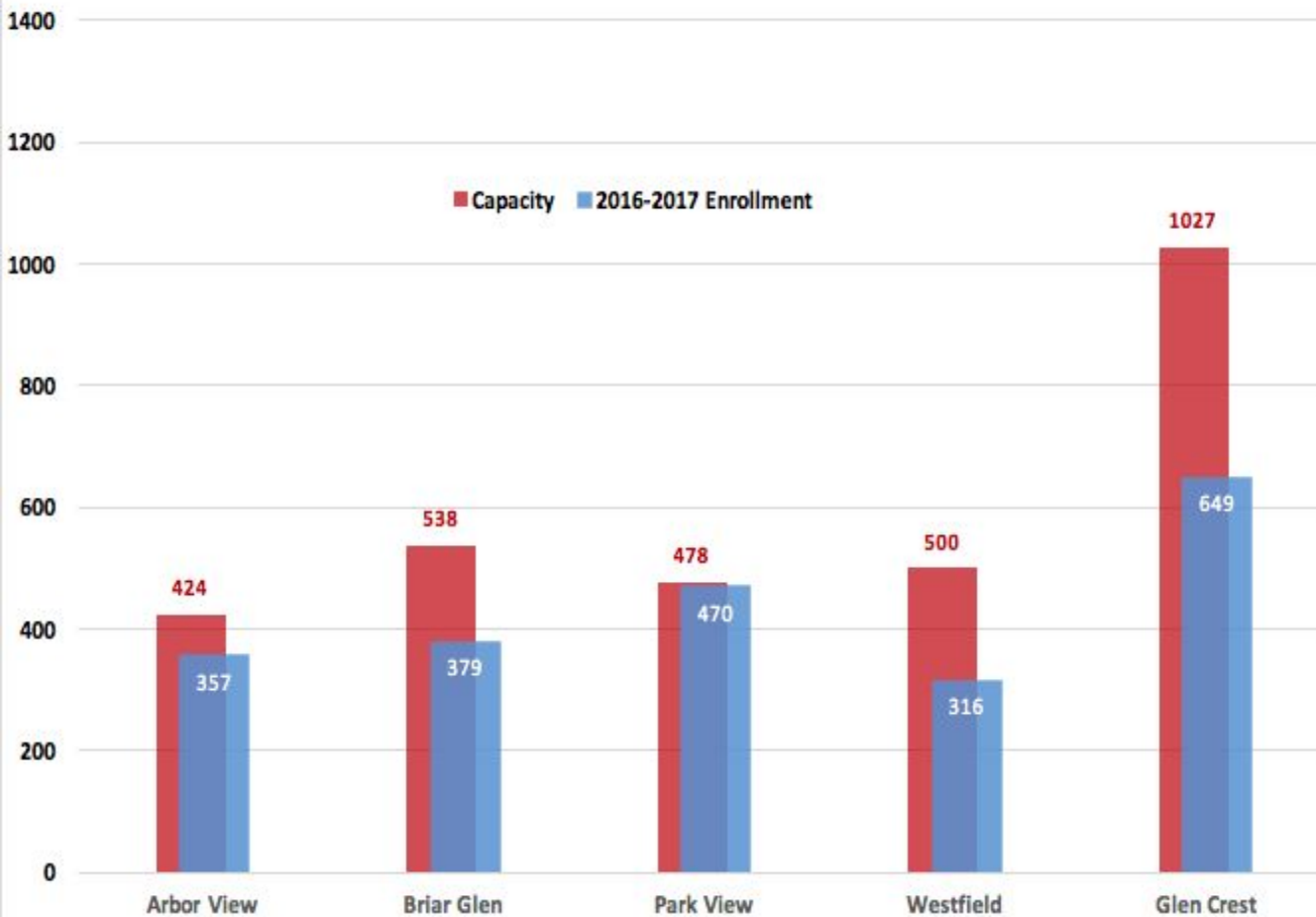
Enrollment Projection Development

- Dr. John Kasarda - Demographer
 - Has completed previous enrollment projection studies for District
- Based on:
 - Enrollment trends
 - Mobility and home sales
 - Live birth data
- Three scenarios provided
 - Scenario A - Absolute minimum number of students anticipated
 - Scenario B - Most likely number of students expected
 - Scenario C - Absolute maximum number of students foreseen

CCSD89 Enrollment by School 2005-2006 Through 2016-2017



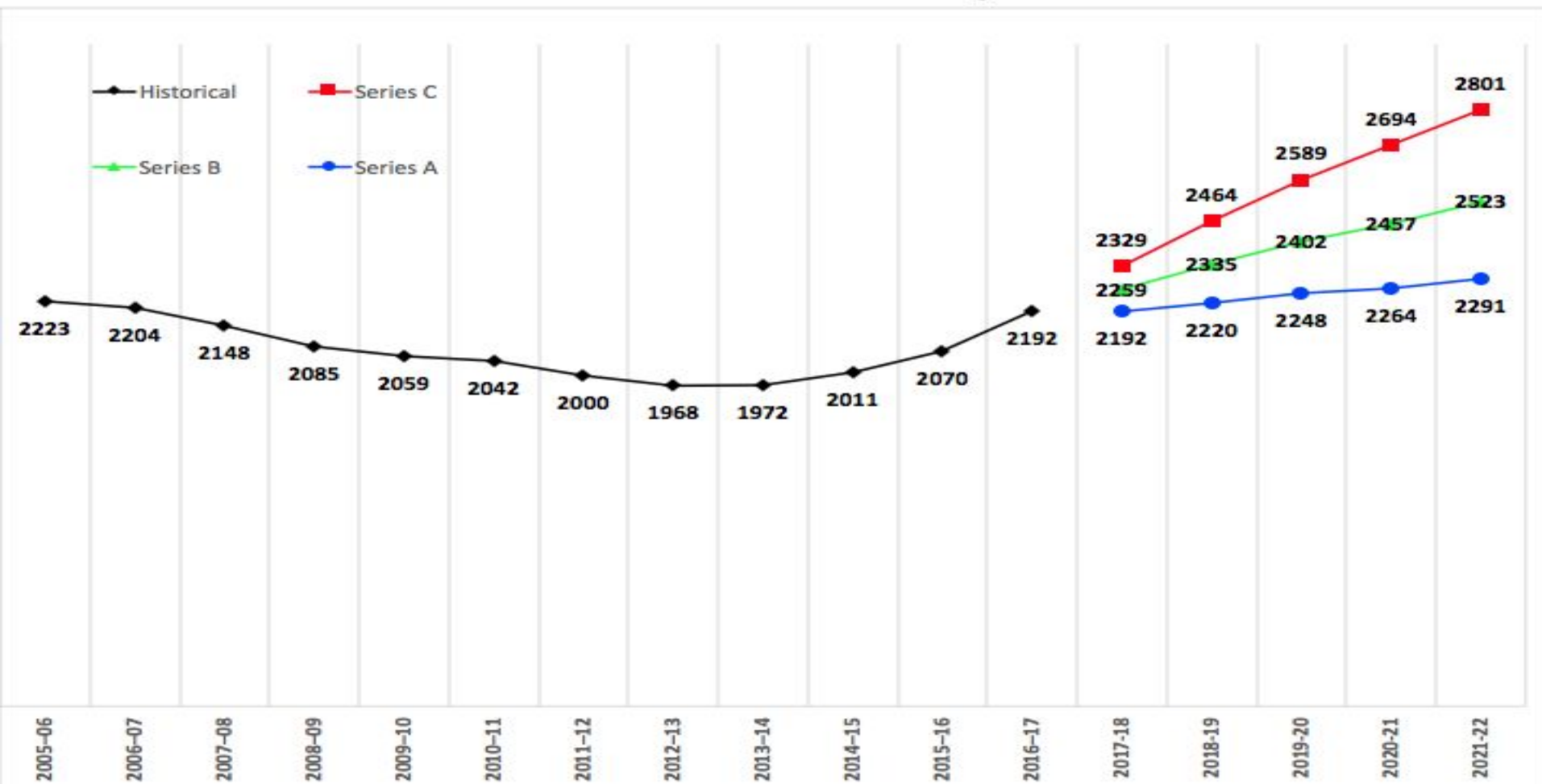
Current Enrollment vs Building Capacity



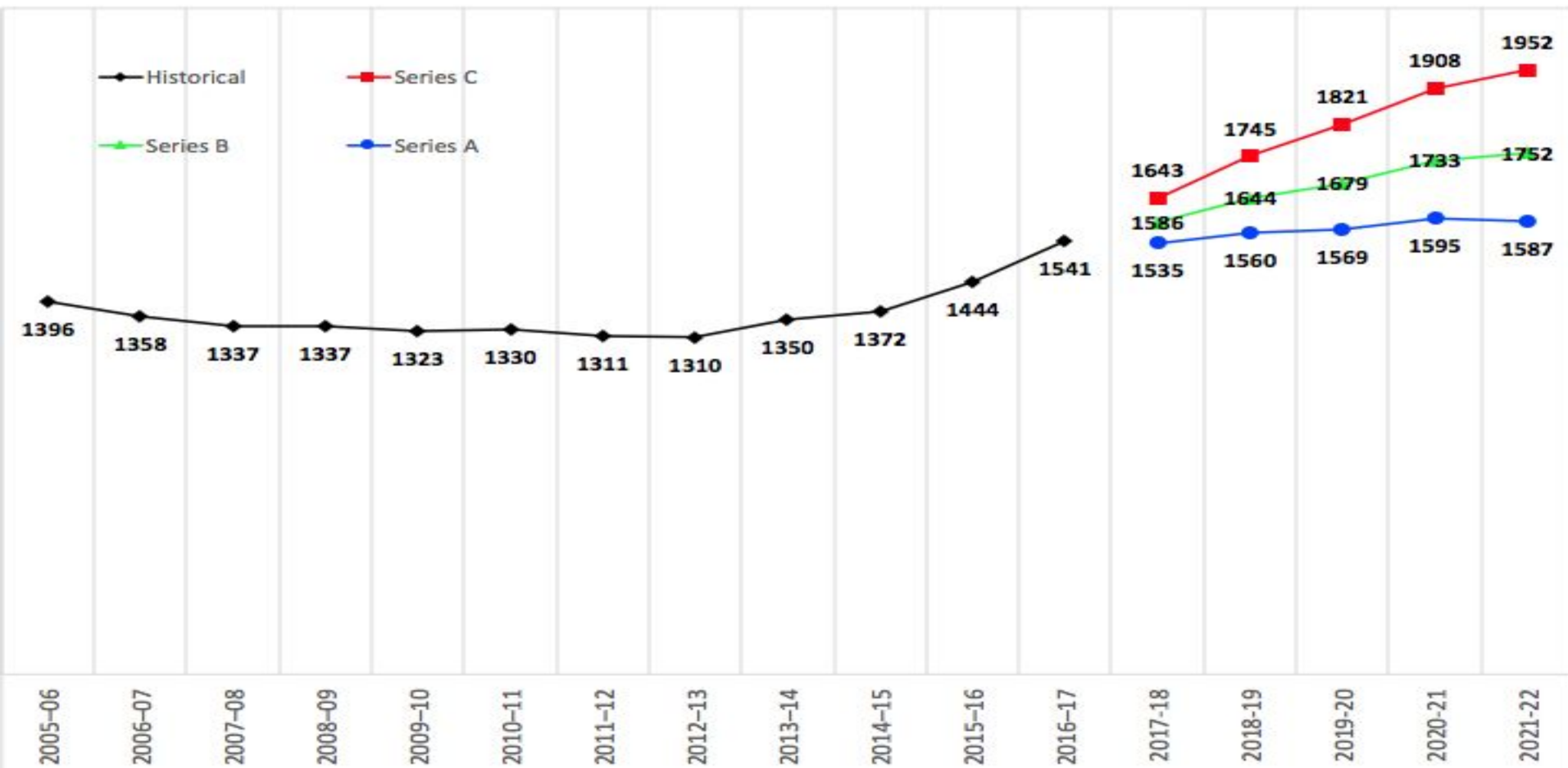
Current Percent of Capacity



Total District Enrollment Projections



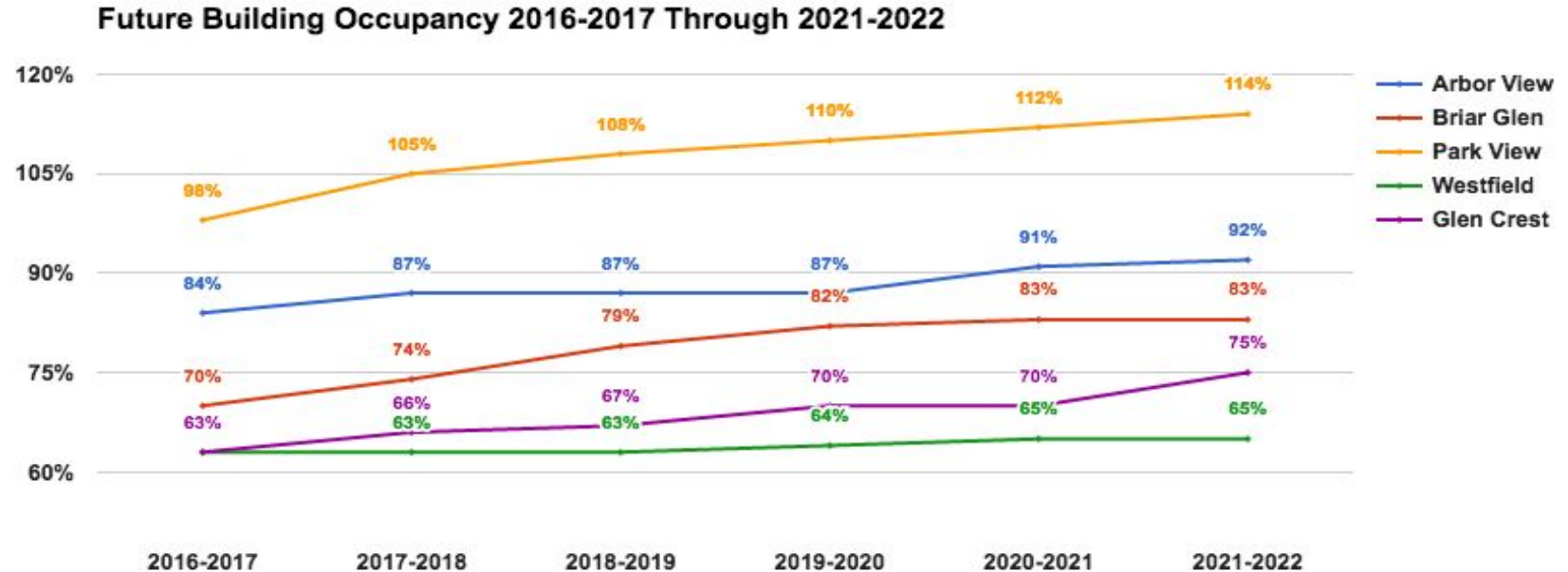
Total Elementary Enrollment



ENROLLMENT PROJECTIONS 2016-2017 THROUGH 2021-2022



Graph of Future Building Occupancy

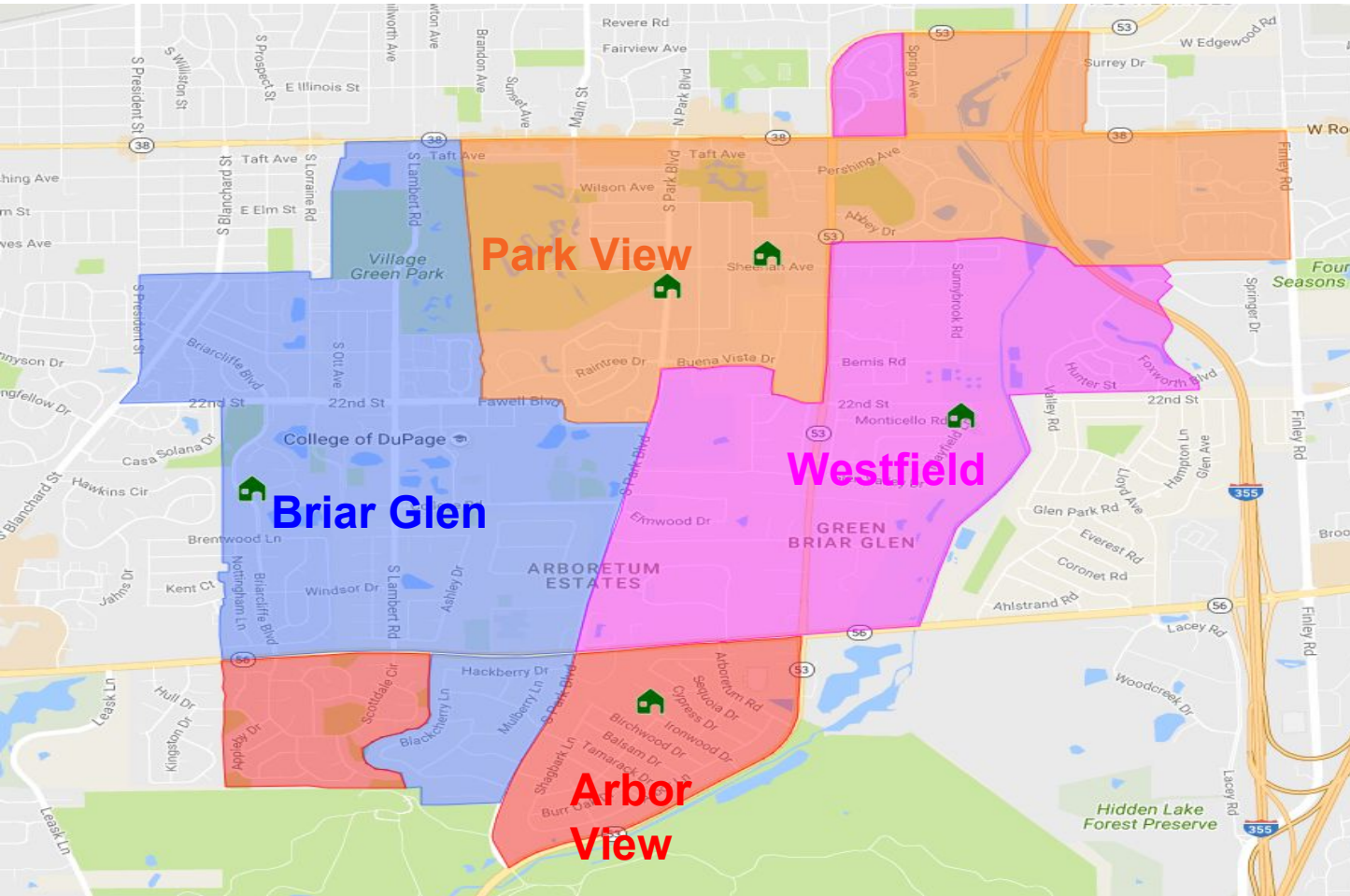


Findings and Questions about Projections

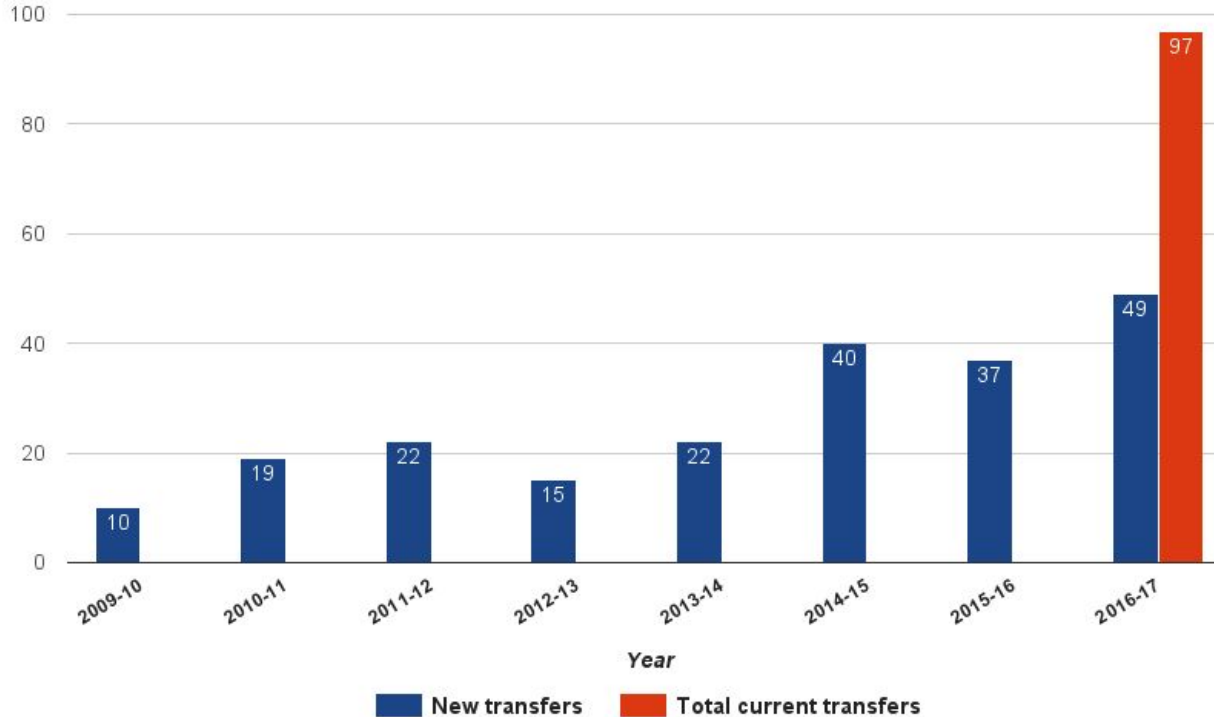
Table discussion 10-15 min

Share thoughts with group

Current District Boundaries

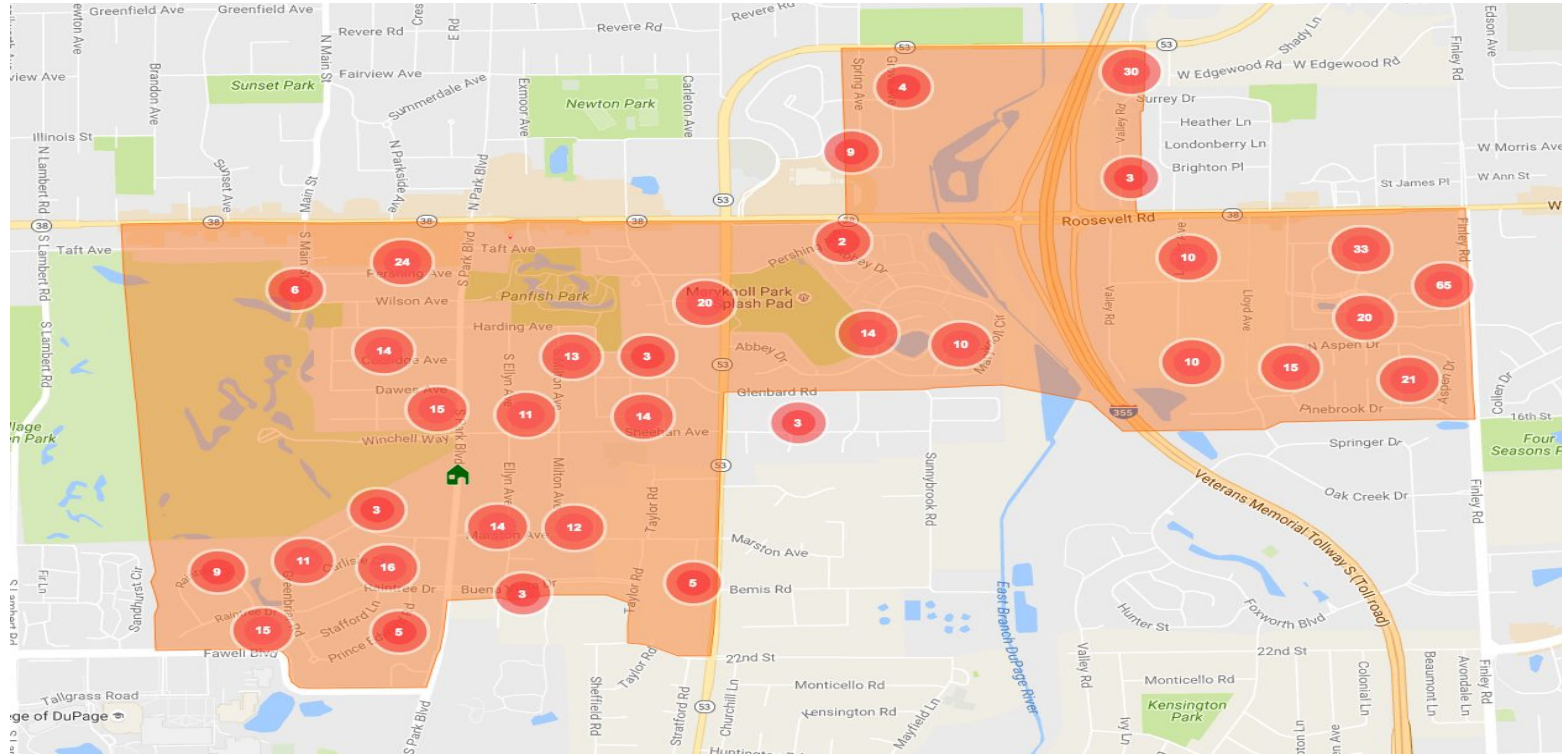


Administrative Transfers 2009/10 - 2016/17

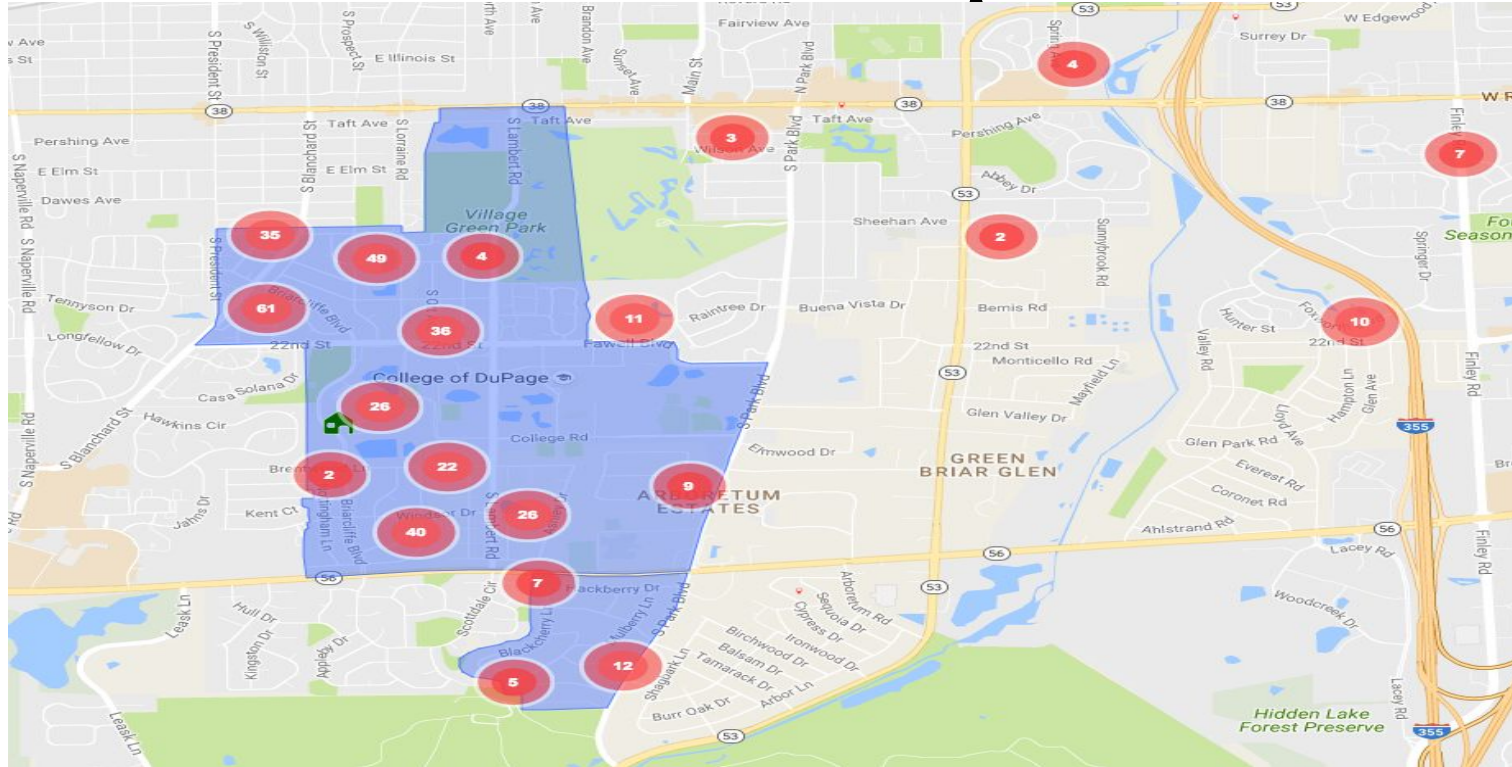


Given updated projections, if no changes are made, Administrative transfers could rise to approximately 140 students, with 66 of those students coming from Park View alone.

Park View Enrollment Map



Briar Glen Enrollment Map







Discuss Possible Solutions

Table discussion 15-20 minutes

Share thoughts with group

Future Meeting Agenda Items

- Investigation of possible solutions presented by committee
- Determine recommendations to be presented to Board of Education
- Next Meeting Date- December 14, 2016

Enrollment History and Trends

Enrollment Committee – Meeting 2
November 17, 2016
